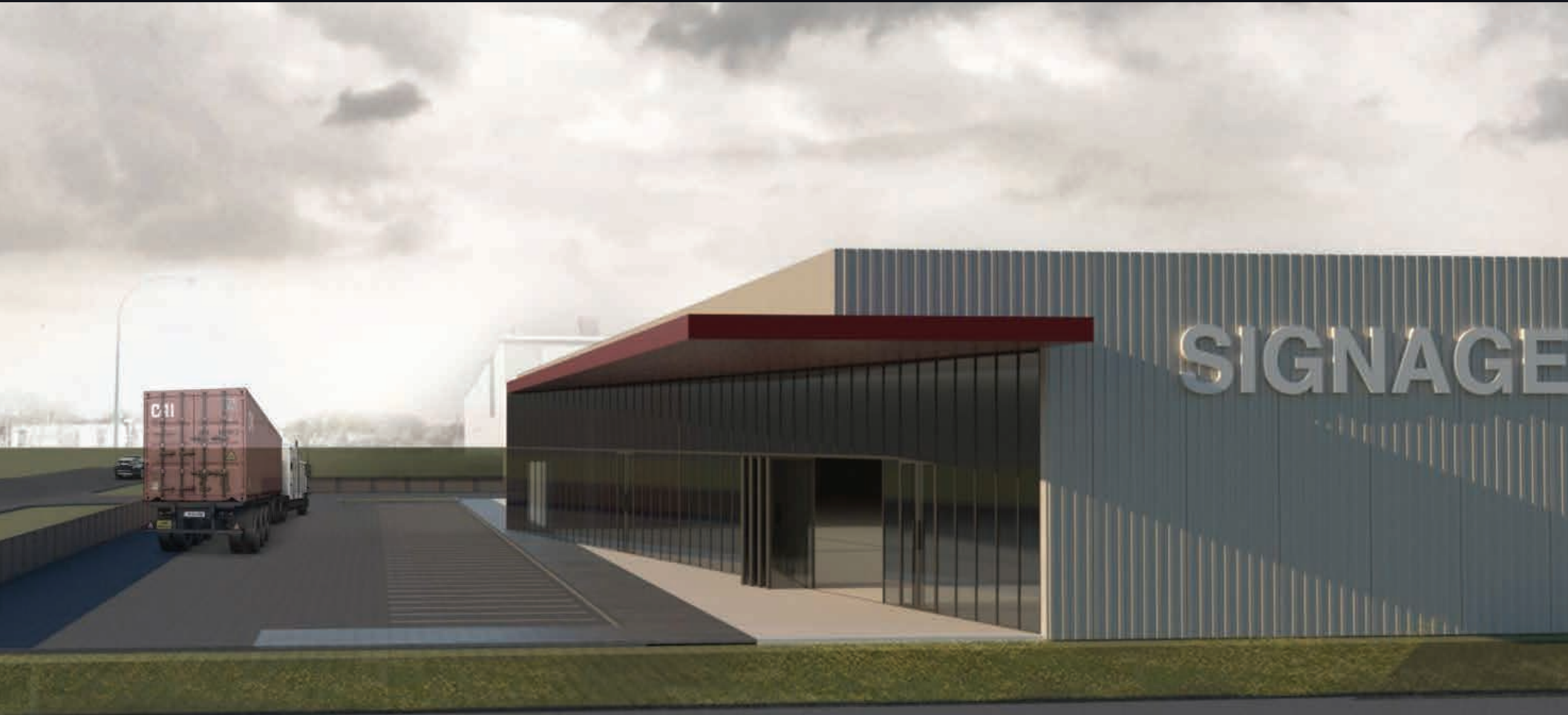


BUILD-TO-SUIT OPPORTUNITY IN INKSTER INDUSTRIAL PARK FOR LEASE



10 BENTALL STREET

WINNIPEG, MB



TREVOR CLAY, Broker, Principal
(204) 985-1365
trevor.clay@capitalgrp.ca
Services provided by Trevor Clay Personal Real Estate Corporation

LUKE PAULSEN, Vice President, Sales & Leasing
(204) 985-1358
luke.paulsen@capitalgrp.ca
Services provided by Luke Paulsen Personal Real Estate Corporation

ERIC OTT, Vice President, Sales & Leasing
(204) 985-1378
eric.ott@capitalgrp.ca
Services provided by Eric. A. Ott Personal Real Estate Corporation

LOCATION AERIAL



CENTREPORT CANADA

CN RAIL LINE

CP RAIL LINE

Industrial
Manufacturing
&
Logistics

CentrePort
Canada
Rail Park

CENTREPORT CANADA WAY

Strategic
Development

Future
Residential

CP RAIL LINE

MURRAY IND.
BOEING
WINPAK
NORTH WEST

BROOKPORT BUS. PK.
MATRIX TRANSPORT
LONGVIEW LOGISTICS
Photo Merit
MERRY WASTELINK

BROOKSIDE BUS. PK.
United Rentals
Kaycan
The Heltons
Fairview
E·B·D
Entrepreneur Press
THE ROSEDALE GROUP
KALTIRE
FedEx
Oil Mart
EASTSIDE HEAVY TRUCK
Comet
Mobil 1
QuikX Transportation
TRANSX
BELL

NORTH INKSTER IND.
KINDERSLEY
EDGE
PENNER INTERNATIONAL
CAT
Montana's TRANSPORT
TFI International

INKSBROOK IND. PK.
SIH
FGI
DASH POS
TEXCAN
Fountain Tire
staples
Sameday WORLDWIDE

NORTHWEST BUS. PK.
MCKESSON
UPS

INKSTER IND. PK.
Photo Merit
RICHIE
NATIONAL HEALTH EQUIPMENT
CANADA GOOSE
Tim Hortons
Sobeys
amazon
PROSOL
GREENBUSH
BROCKWHITE

INKSTER BOULEVARD

OAK POINT IND.
Erb
SANDY CARTAGE
Ocean TRUCKS
PACIFIC
MASSIM
DARUCWINE
WINE MAYNOR

BROOKSIDE IND. PK.
FREIGHTLINER
ROSENAU TRANSPORT ETS
MAJOR Drilling
COSENTINO
Inaltufarm
IPEX
NJJI

WESTON SHOPS
MJ
alcraft
ygn
CP

RRC
POLYTECH

OMAND'S CREEK IND.
ASL Distribution Services
Cardinal Health
Lumi-Jet
MATRIX TRANSPORT
Veritiv
m northern
Core-Mark

WINNIPEG
RICHARDSON
INTERNATIONAL AIRPORT

ST. JAMES IND.
NAPA
Bison
Costco
CertainTeed
Russett Metals
StandardAero
EMCO CORPORATION
MAGELLAN

Pp
POLO PARK

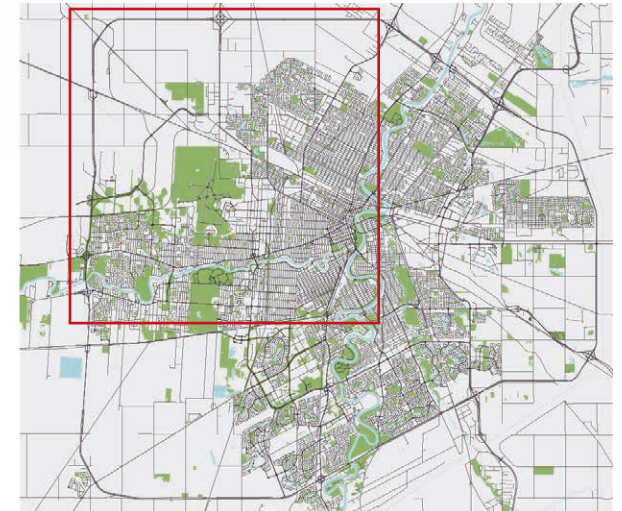


NORTHWEST WINNIPEG OVERVIEW AERIAL

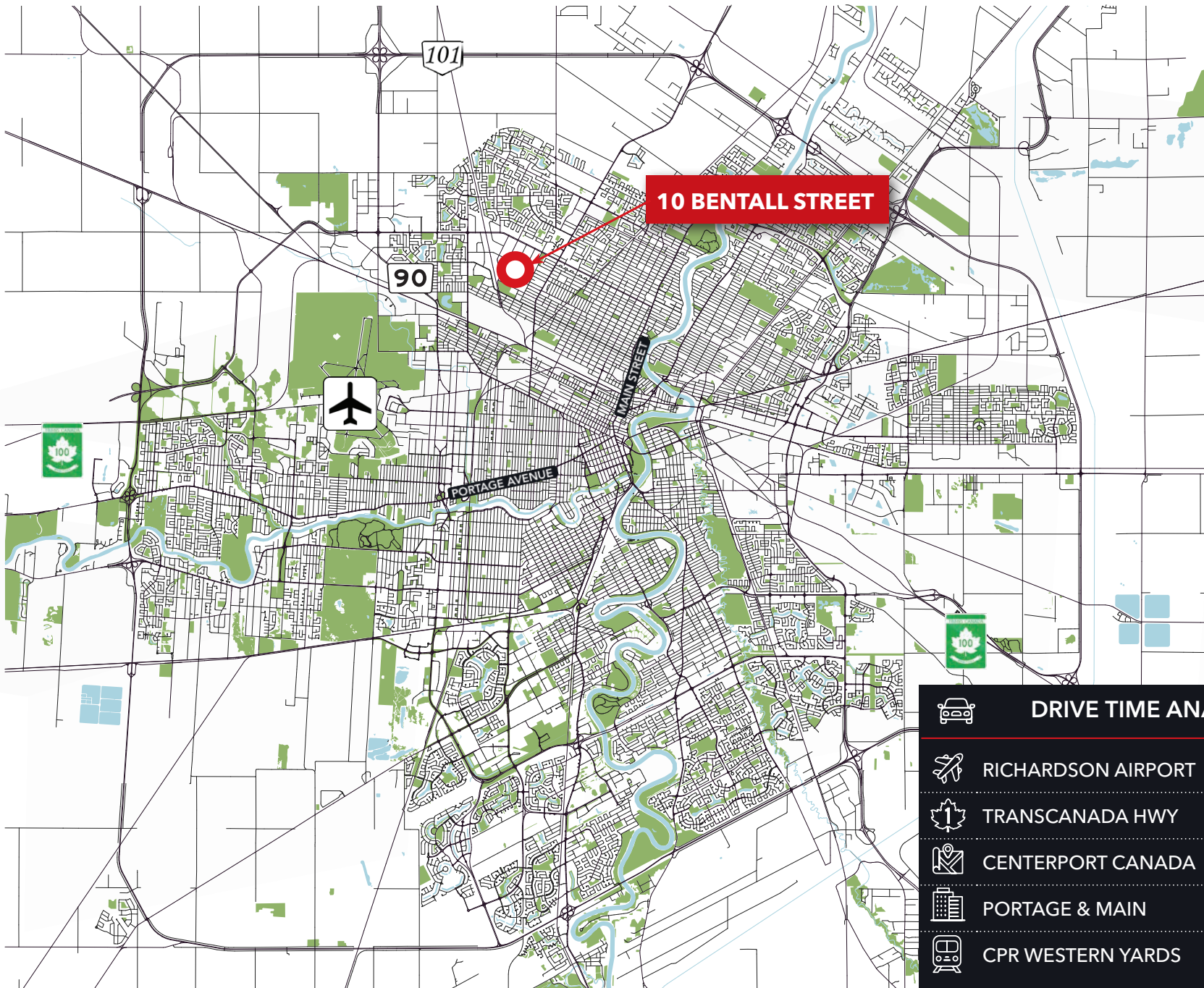








INKSTER INDUSTRIAL PARK

- Inkster Industrial Park is Winnipeg's largest and offers 9.3 million square feet of space on 600 acres of land
- Located in Northwest Winnipeg, Inkster Industrial Park offers excellent access to critical transportation routes including Winnipeg's new Centreport Canada Way
- Its location in proximity to James Richardson International Airport is of significant value to many users
- The Park is also well serviced by rail with a direct connection to CPR's Weston Yards



LOCATION OVERVIEW



DRIVE TIME ANALYSIS		
		
	RICHARDSON AIRPORT	13 min. / 7.4 km
	TRANSCANADA HWY	18 min. / 9.0 km
	CENTERPORT CANADA	10 min. / 5.5 km
	PORTAGE & MAIN	15 min. / 6.8 km
	CPR WESTERN YARDS	5 min. / 2.2 km

Contact

TREVOR CLAY, Broker, Principal

(204) 985-1365

trevor.clay@capitalgrp.ca

Services provided by Trevor Clay Personal Real Estate Corporation

LUKE PAULSEN, Vice President, Sales & Leasing

(204) 985-1358

luke.paulsen@capitalgrp.ca

Services provided by Luke Paulsen Personal Real Estate Corporation

ERIC OTT, Vice President, Sales & Leasing

(204) 985-1378

eric.ott@capitalgrp.ca

Services provided by Eric A. Ott Personal Real Estate Corporation

CAPITAL COMMERCIAL REAL ESTATE SERVICES INC.

300-570 Portage Avenue, Winnipeg, MB R3C 0G4 | T (204) 943-5700 | F (204) 956-2783 | capitalgrp.ca