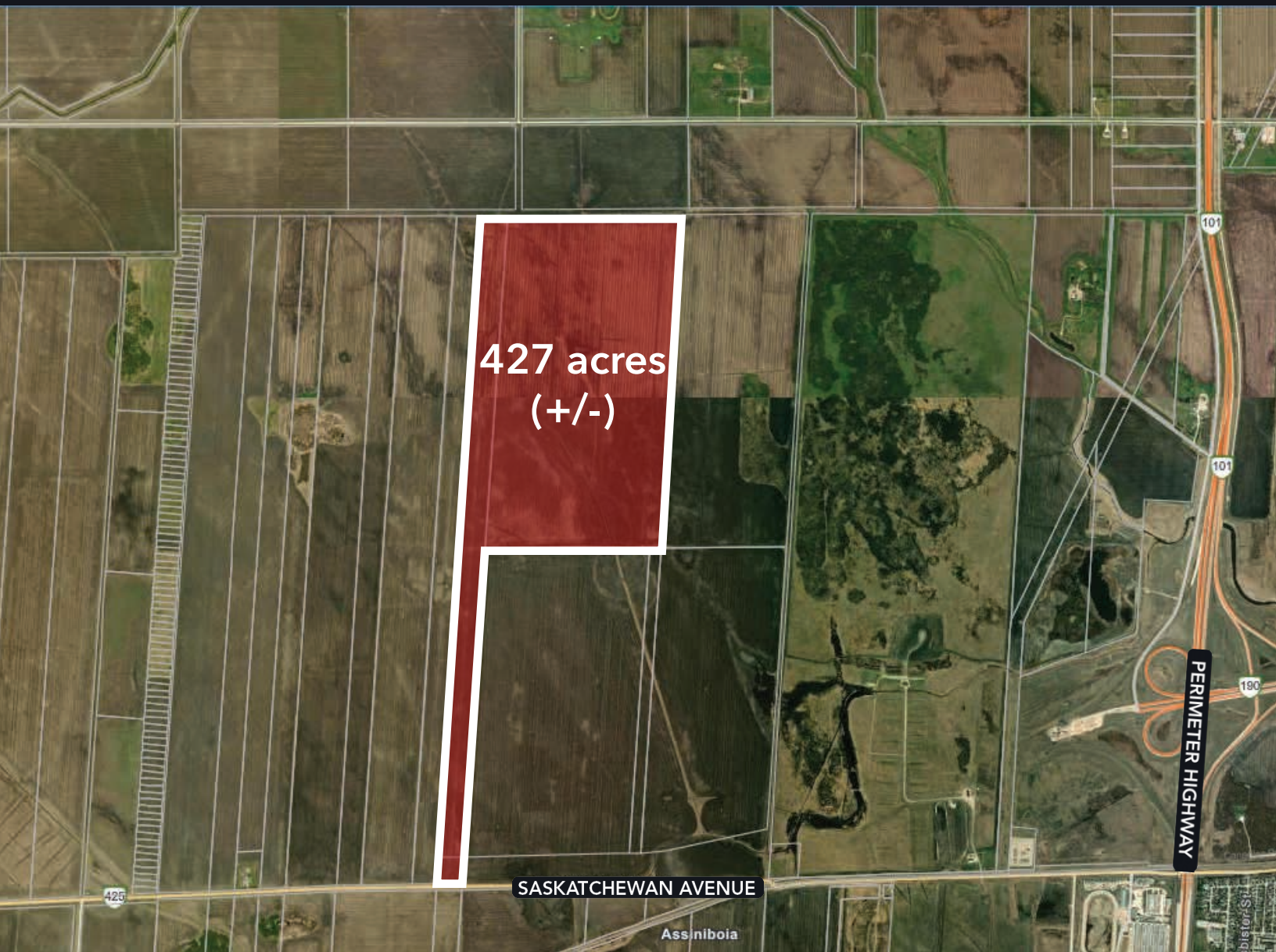


INVESTMENT/DEVELOPMENT LAND FOR SALE

427 ACRES (+/-)

HEADINGLEY, MB



BOB ANTYMNIUK, Vice President, Sales & Leasing
(204) 985-1364
bob.antymniuk@capitalgrp.ca

PROPERTY DETAILS

LAND AREA (+/-) 427 acres (Lot 62-65) (Lots 66 & 67 under expropriation)

ZONING RU Rural General

SALE PRICE \$9,500.00 per acre

HIGHLIGHTS

- In the vicinity of the CentrePort Canada Way - Saskatchewan Avenue extension west
- Land is unserviced

LOCATION AERIAL



Contact

BOB ANTYMNIUK, Vice President, Sales & Leasing

(204) 985-1364

bob.anytmniuk@capitalgrp.ca

CAPITAL COMMERCIAL REAL ESTATE SERVICES INC.

300-570 Portage Avenue, Winnipeg, MB R3C 0G4 | T (204) 943-5700 | F (204) 956-2783 | capitalgrp.ca

Disclaimer: Capital Commercial Real Estate Services Inc. ("Capital") does not accept or assume any responsibility or liability, direct or consequential, for the information set out herein, including, without limitation, any projections, images, opinions, assumptions and estimates obtained from third parties. This information has not been verified by Capital, and Capital does not guarantee the accuracy, correctness and completeness of this information. The recipient of this information should take such steps as the recipient may deem necessary to verify the information in this document prior to placing any reliance upon it. The information may change and any property described in this document may be withdrawn from the market at any time without notice or obligation to the recipient from Capital.