



*~ Retail/Office Property Located in Wolseley ~*

**545 Telfer Street South**

**WINNIPEG, MB**

Capital Commercial Investment Services ("Capital") is pleased to offer for sale 100% interest in 545 Telfer Street South (the "Property"). The Property totals 2,437 sq. ft. of developed retail/office space situated on 4,055 sq. ft. of land. The Property is well-located in Wolseley near the St. James Retail Node and the Erin/Wall Business Corridor in an established residential community. The Property is fully occupied by a specialized audio/visual business and includes a fully fenced compound area.



# Property Details

<b>BUILDING DESCRIPTION</b>	One storey retail building
<b>GROSS LEASABLE AREA (+/-)</b>	2,437 sq. ft.
<b>SITE AREA (+/-)</b>	4,055 sq. ft.
<b>ZONING</b>	R2 - Res - Two Family
<b>STRUCTURE</b>	Concrete foundation with wood frame construction
<b>FRONTAGE</b>	33 ft. on Telfer Street S
<b>ASKING PRICE</b>	\$425,000



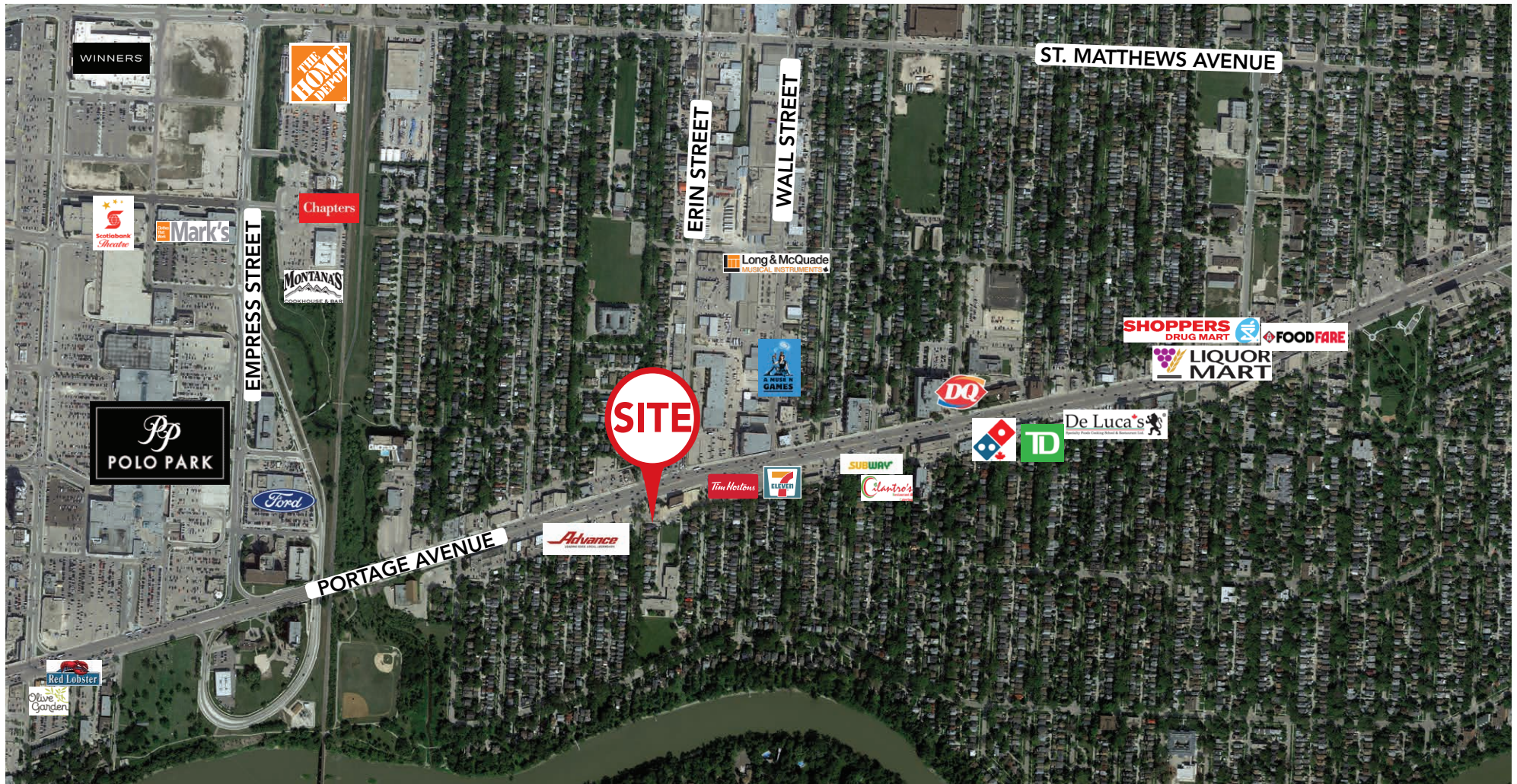
## PROPERTY HIGHLIGHTS

- Site located a few blocks east from St. James Retail node and CF Polo Park
- Fully Fenced compound area
- Developed office/retail space
- Ideal for owner Occupier

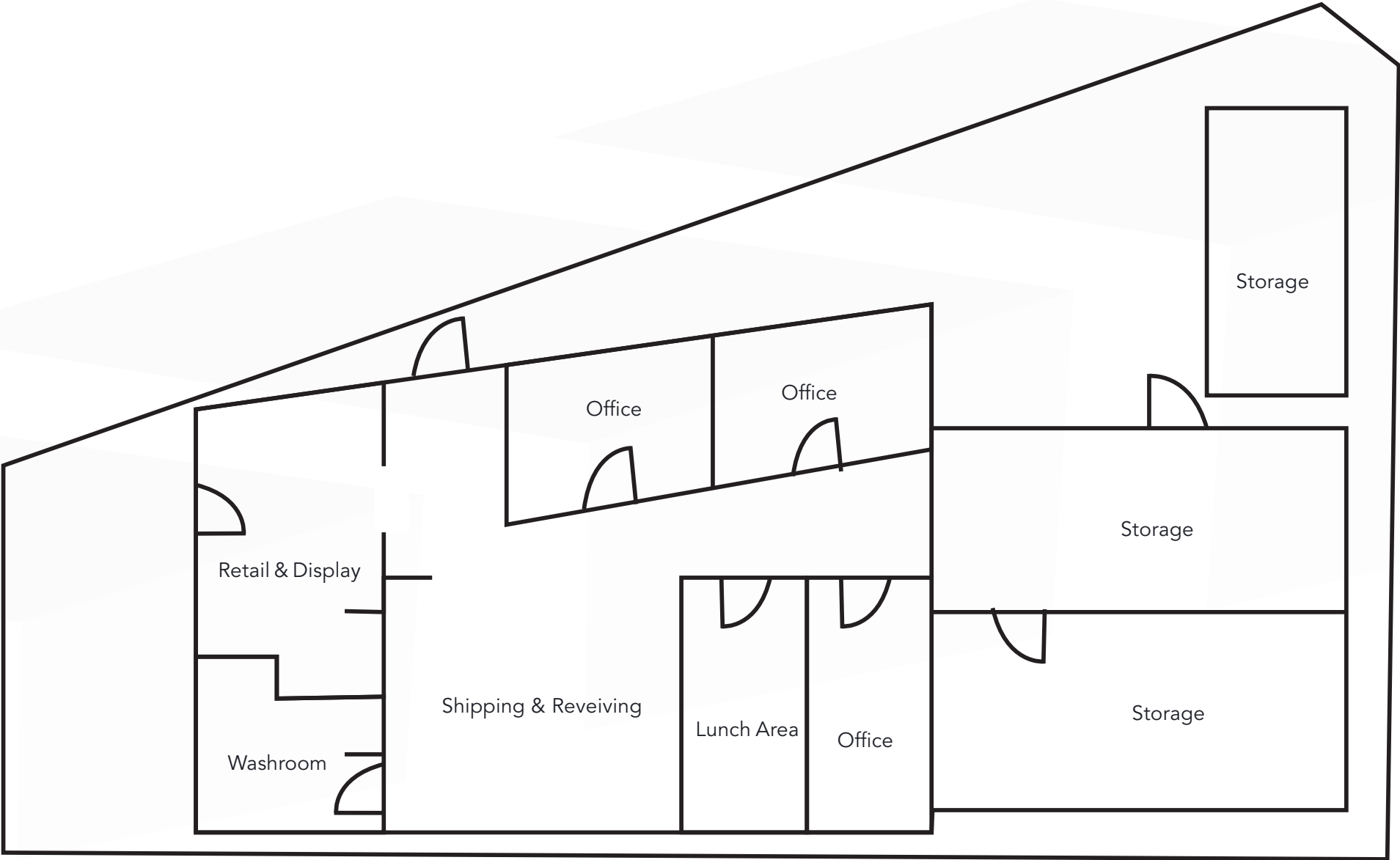


# Location Overview

546 Telfer Street South is in Winnipeg's highly sought-after Wolseley neighbourhood, just half a block from Portage Avenue, a major west-east thoroughfare. Known for its rich history, boutique shops, and vibrant character, Wolseley is one of the city's most desirable and dense residential areas, offering a blend of amenities and convenient access to downtown. Additionally, the property is offering a blend of amenities and convenient access to downtown. Additionally, the property is just a short walk from the Polo Park Shopping Centre, the St. James Retail Node and Omand's Creek.



# *Floor Plan*





**George Richards**  
BIG & TALL MENSWEAR



PORTAGE AVENUE



# Contact

**TREVOR CLAY**, Broker, Principal

(204) 985-1365

[trevor.clay@capitalgrp.ca](mailto:trevor.clay@capitalgrp.ca)

*Services provided by Trevor Clay Personal Real Estate Corporation*

**BRYN OLIVER**, Principal

(204) 985-1379

[bryn.oliver@capitalgrp.ca](mailto:bryn.oliver@capitalgrp.ca)

*Services provided by Bryn Oliver Personal Real Estate Corporation*

**LUKE PAULSEN**, Vice President, Sales & Leasing

(204) 985-1358

[luke.paulsen@capitalgrp.ca](mailto:luke.paulsen@capitalgrp.ca)

*Services provided by Luke Paulsen Personal Real Estate Corporation*

**CAPITAL COMMERCIAL REAL ESTATE SERVICES INC.**

300-570 Portage Avenue, Winnipeg, MB R3C 0G4 | T (204) 943-5700 | F (204) 956-2783 | [capitalgrp.ca](http://capitalgrp.ca)

Disclaimer: Capital Commercial Real Estate Services Inc. ("Capital") does not accept or assume any responsibility or liability, direct or consequential, for the information set out herein, including, without limitation, any projections, images, opinions, assumptions and estimates obtained from third parties. This information has not been verified by Capital, and Capital does not guarantee the accuracy, correctness and completeness of this information. The recipient of this information should take such steps as the recipient may deem necessary to verify the information in this document prior to placing any reliance upon it. The information may change and any property described in this document may be withdrawn from the market at any time without notice or obligation to the recipient from Capital.