

NEW BUILD INDUSTRIAL SPACE IN PLESSIS BUSINESS CENTRE



29 & 35 AUTUMN WAY

WINNIPEG, MB



LUKE PAULSEN, Vice President, Sales & Leasing
(204) 985-1358
luke.paulsen@capitalgrp.ca
Services provided by Luke Paulsen Personal Real Estate Corporation

GARY GOODMAN, Vice President, Sales & Leasing
(204) 997-4831
gary.goodman@capitalgrp.ca

PROPERTY OVERVIEW

PROPERTY DETAILS

ELECTRICAL	200 amp 240 volt 3phase in each bay
LOADING	14' x 14' Grade level doors
CLEAR HEIGHT (+/-)	20'
LIGHTING	LED
PLUMBING	Roughed in plumbing provided
HVAC	Gas fired unit heaters

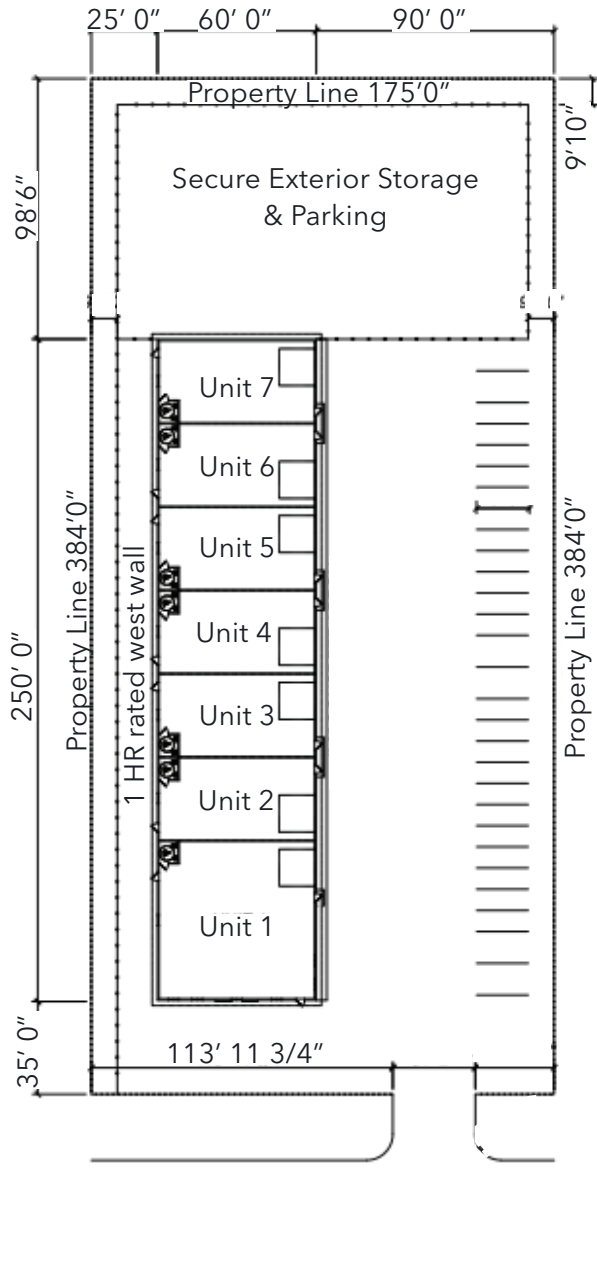
OFFERING DETAILS

BUILDING AREA (+/-)	15,000 sq. ft. each
AREA AVAILABLE (+/-)	1,893 - 15,000 sq. ft.
NET RENTAL RATE	\$16.95 per sq. ft.
ADDITIONAL RENT	\$4.00 per sq. ft.
AVAILABILITY	Immediately

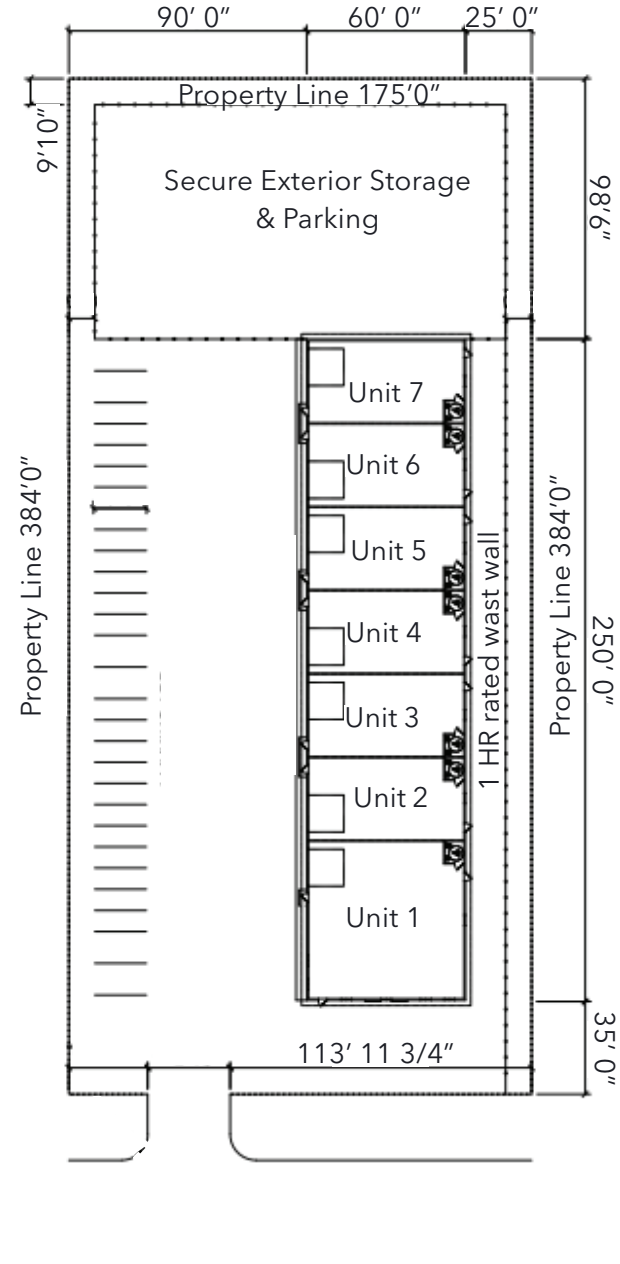


SITE PLAN

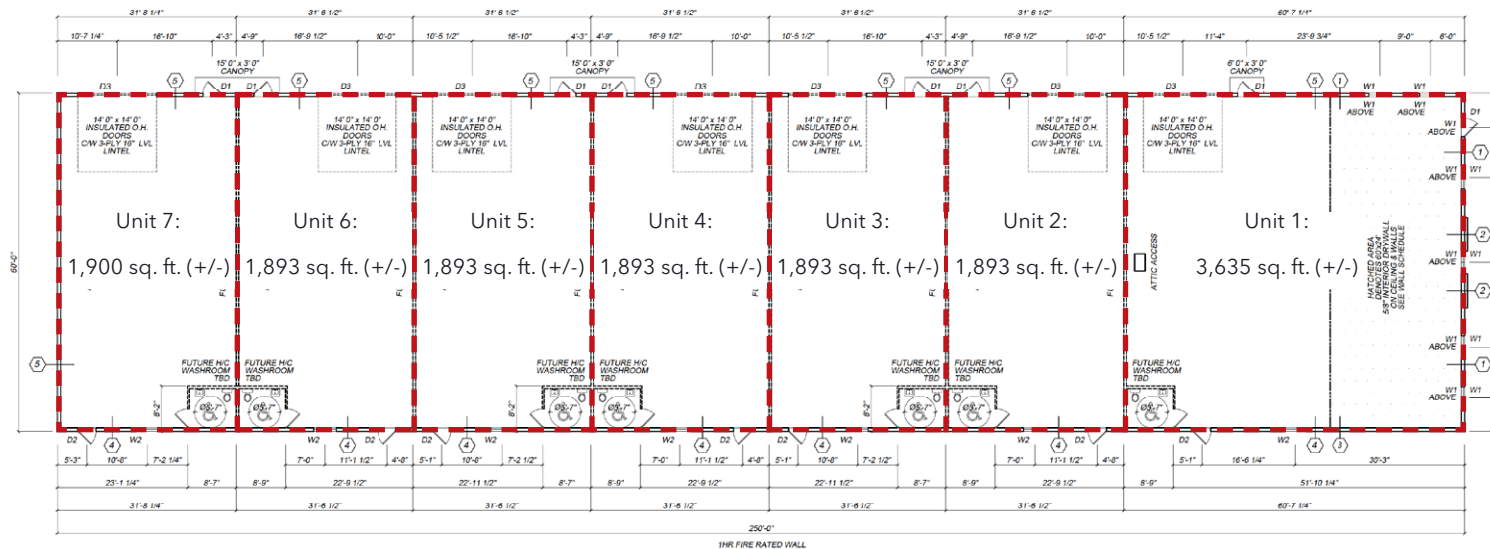
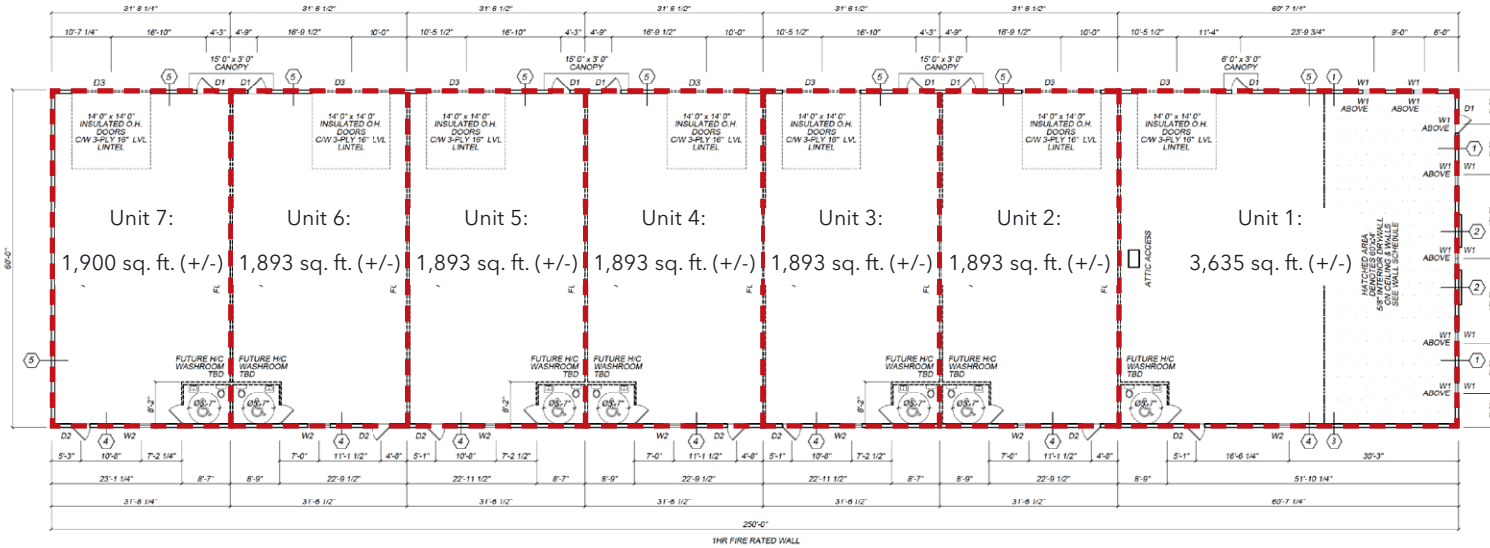
29 AUTUMN WAY



35 AUTUMN WAY



BUILDING PLAN



EXTERIOR PHOTOS



DRIVE TIME ANALYSIS



RICHARDSON INT'L AIRPORT
46 minutes



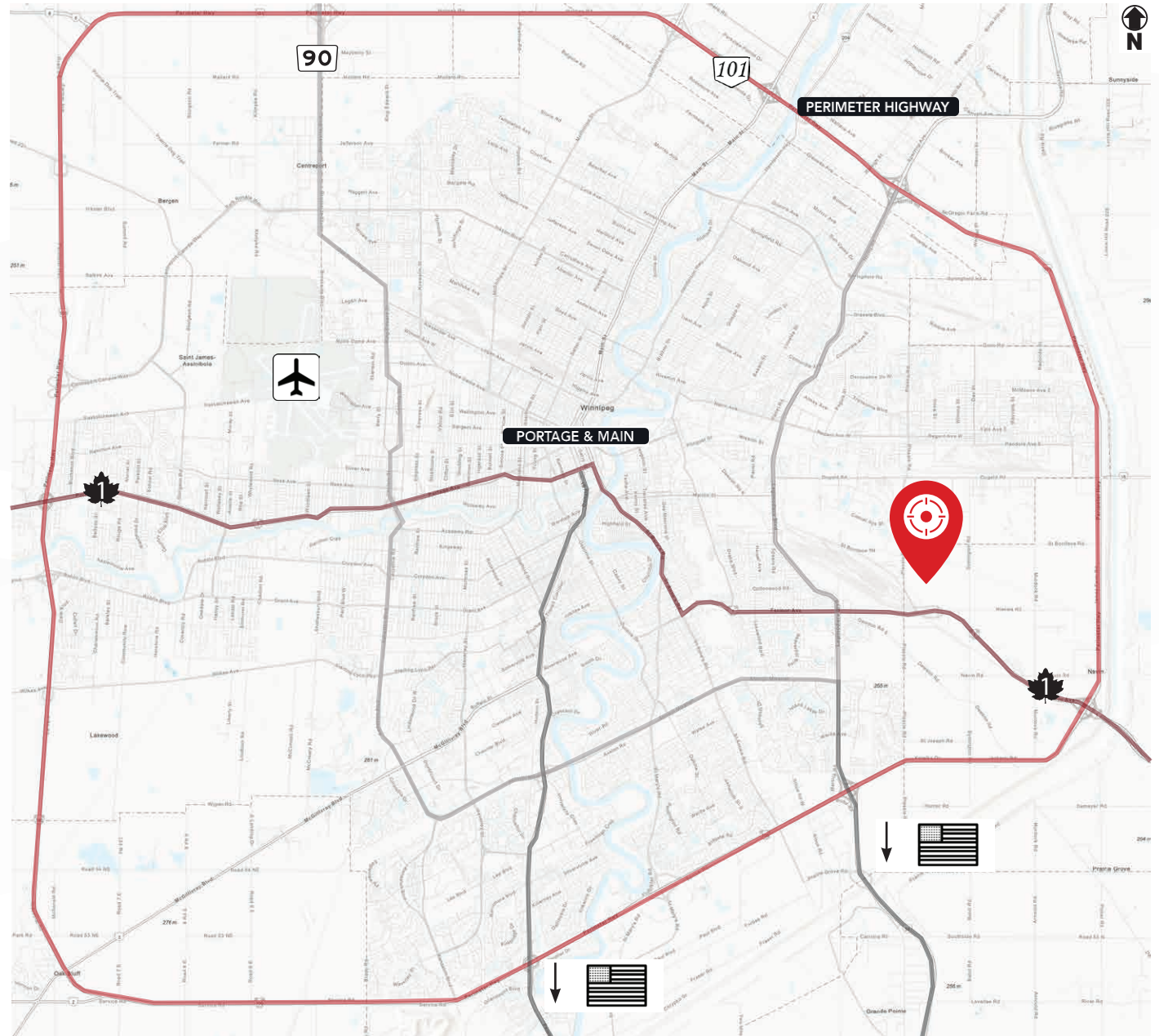
PORTAGE AND MAIN
25 minutes



TRANSCANADA HIGHWAY
2 minutes



PERIMETER HIGHWAY
7 minutes





COMMERCIAL REAL ESTATE
SERVICES INC.

CONTACT

LUKE PAULSEN, Vice President, Sales & Leasing

(204) 985-1358

luke.paulsen@capitalgrp.ca

Services provided by Luke Paulsen Personal Real Estate Corporation

GARY GOODMAN, Vice President, Sales & Leasing

(204) 997-4831

gary.goodman@capitalgrp.ca

CAPITAL COMMERCIAL REAL ESTATE SERVICES INC.

300-570 Portage Avenue, Winnipeg, MB R3C 0G4 | T (204) 943-5700 | F (204) 956-2783 | capitalgrp.ca

Disclaimer: Capital Commercial Real Estate Services Inc. ("Capital") does not accept or assume any responsibility or liability, direct or consequential, for the information set out herein, including, without limitation, any projections, images, opinions, assumptions and estimates obtained from third parties. This information has not been verified by Capital, and Capital does not guarantee the accuracy, correctness and completeness of this information. The recipient of this information should take such steps as the recipient may deem necessary to verify the information in this document prior to placing any reliance upon it. The information may change and any property described in this document may be withdrawn from the market at any time without notice or obligation to the recipient from Capital.