

C3 ZONED DEVELOPMENT LAND IN SW WINNIPEG FOR SALE/LEASE



1447 ST. ANNE'S ROAD

WINNIPEG, MB



CONTACT

PETER KAUFMANN, Vice President, Sales & Leasing
(204) 985-1362
peter.kaufmann@capitalgrp.ca
Services provided by Peter Kaufmann Personal Real Estate Corporation

ERIC OTT, Vice President, Sales & Leasing
(204) 985-1378
eric.ott@capitalgrp.ca
Services provided by Eric A. Ott Personal Real Estate Corporation

INVESTMENT DETAILS

Capital Commercial Real Estate Services Inc. is pleased to offer for sale 7.061 acres (+/-) of C3 zoned land for redevelopment. This well-situated parcel has exposure to both St. Anne's Road, and the South Perimeter Highway.

HIGHLIGHTS



SALE PRICE: \$3,727,500



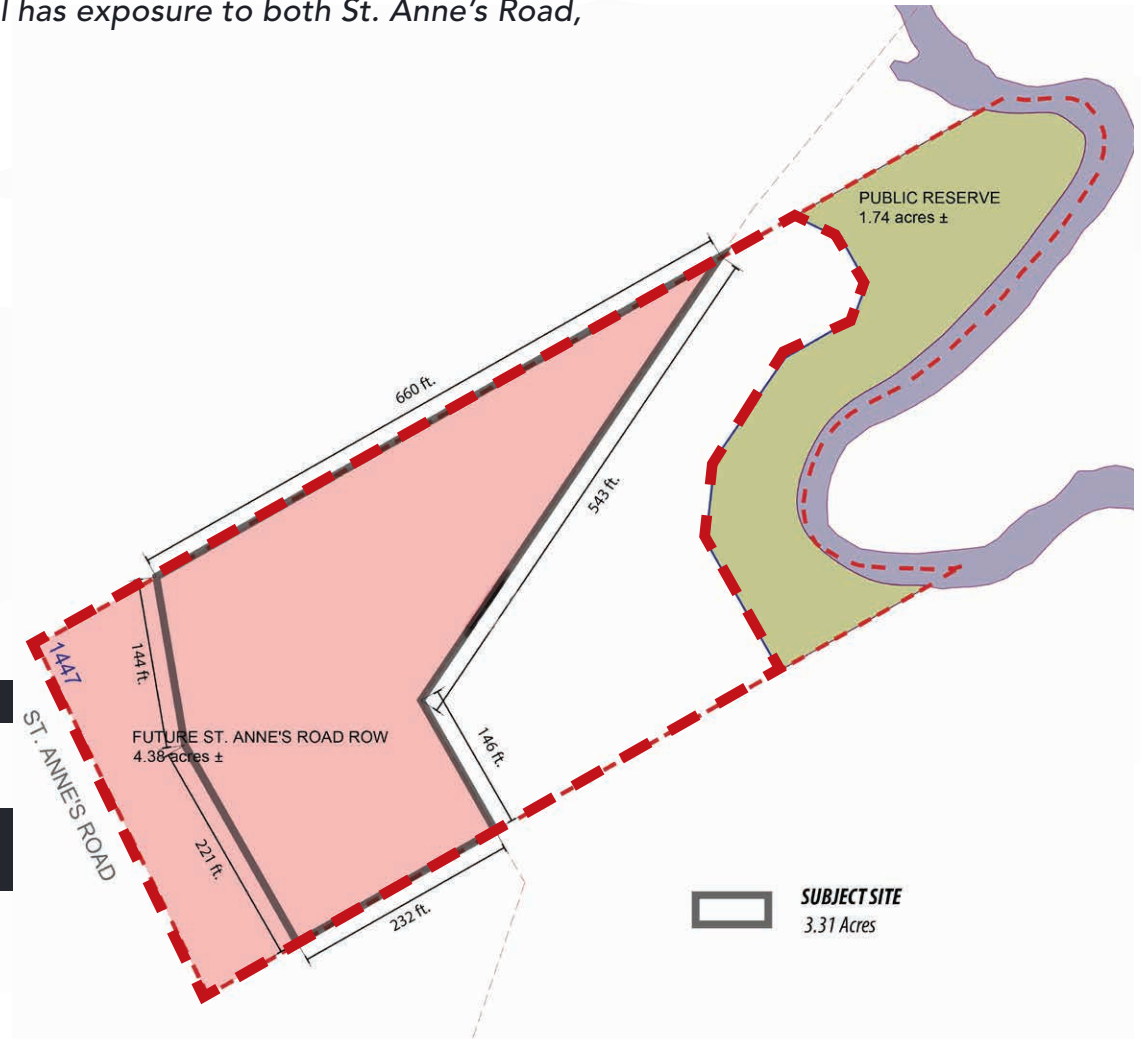
LAND LEASE: \$3,500 PER ACRE, PER MONTH RENT



C3 ZONING IDEAL FOR SELF STORAGE OR AUTOMOTIVE, LIGHT TRUCK SALES & RENTAL USE



EXPOSURE ON ST. ANNE'S & PERIMETER HWY



LIGHT RED

- 4.38 acres (+/-)
- Future Highways Exchange Area
- Suitable for parking use

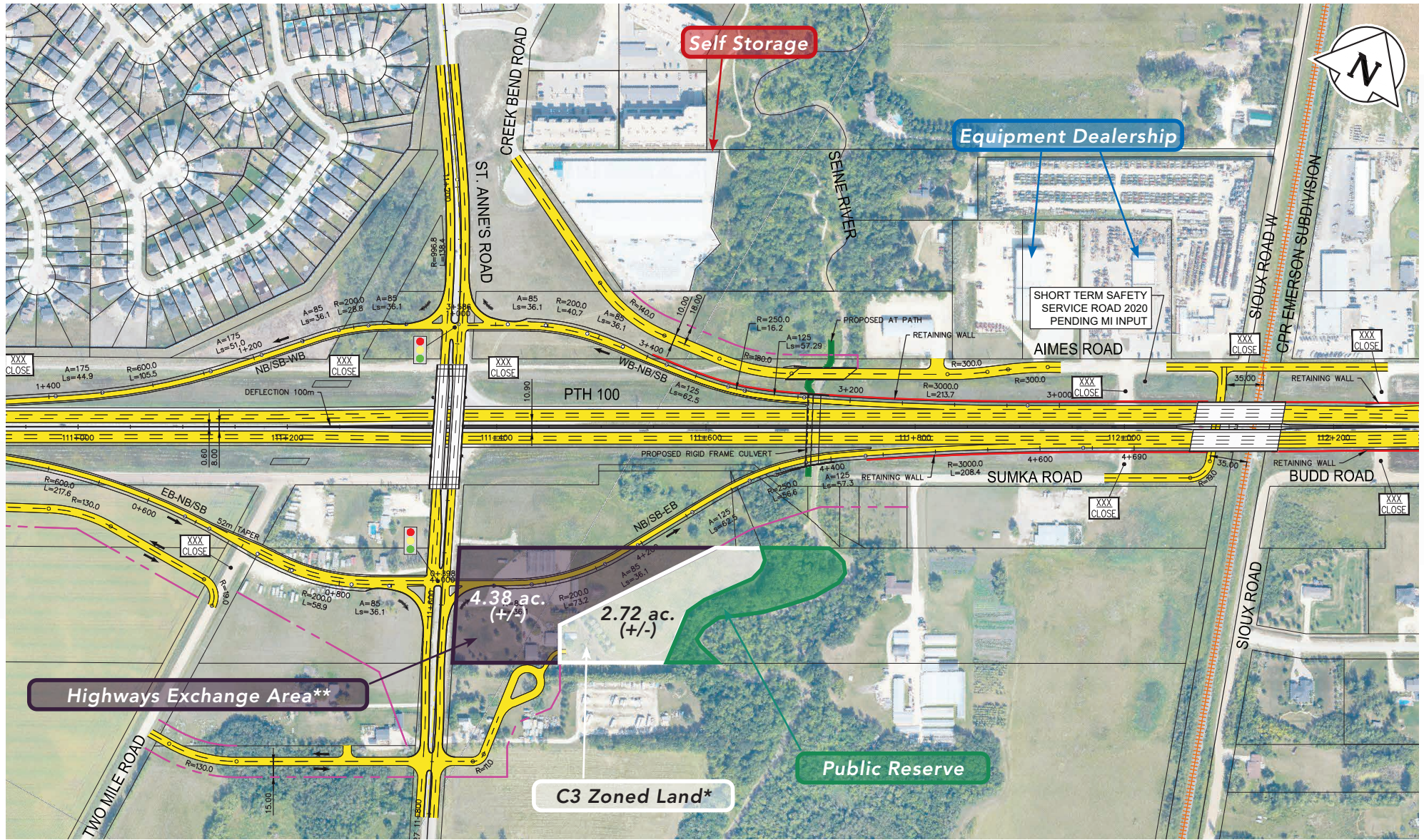
WHITE

- 2.72 acres (+/-)
- C3 Zoned Land

GREEN

- City of Winnipeg Land
- Public Reserve

HIGHWAY DESIGN STUDY



*suitable for automotive, light truck sales & rental; or for self storage use

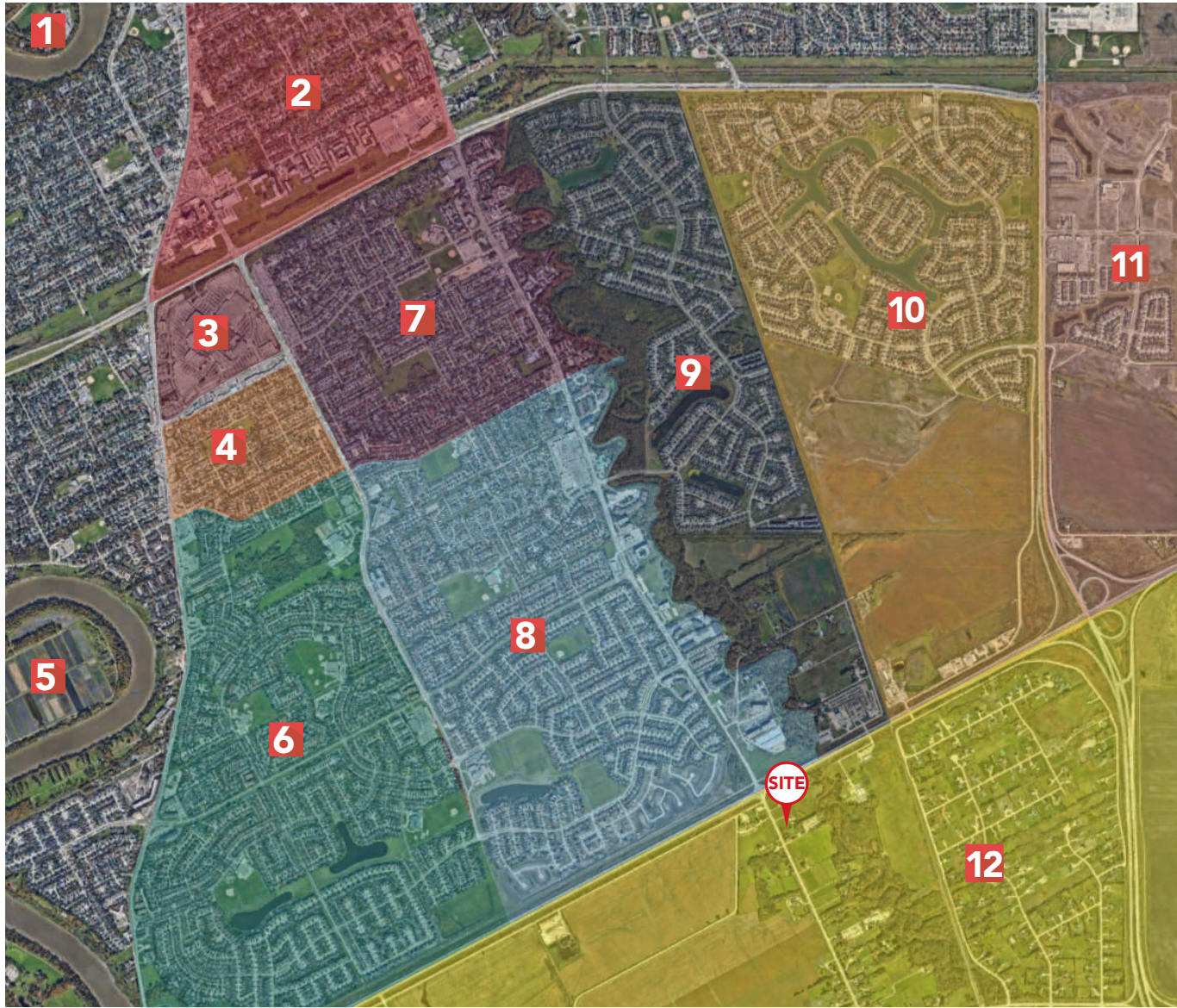
**suitable for accessory parking use

PROPERTY DETAILS

OWNER	1181719 B.C. LTD.
LEGAL DESCRIPTION	LOT 1 PLAN 73413 WLTO IN OTM LOT 152 AND 153 PARISH OF ST NORBERT
TITLE NO.	3300782/1
ROLL NO.	08081226750
ZONING	C3
LAND AREA (+/-)	7.1 acres
PROPERTY TAXES	\$3,790.80 (2025)
SALE PRICE	\$3,727,500
LAND LEASE	\$3,500 per acre, per month net rent



AREA OVERVIEW



HIGHLIGHTS

- 1** St. John's-Ravenscourt School
- 2** Worthington
- 3** St. Vital Centre
- 4** Vista
- 5** University of Manitoba
- 6** River Park South
- 7** Meadowood
- 8** Dakota Crossing
- 9** Royalwood
- 10** Island Lakes
- 11** Sage Creek
- 12** St. Vital Perimeter South

DRIVE TIME ANALYSIS



RICHARDSON INT'L AIRPORT

26 minutes



PORTAGE AND MAIN

16 minutes



ST. VITAL CENTRE

8 minutes



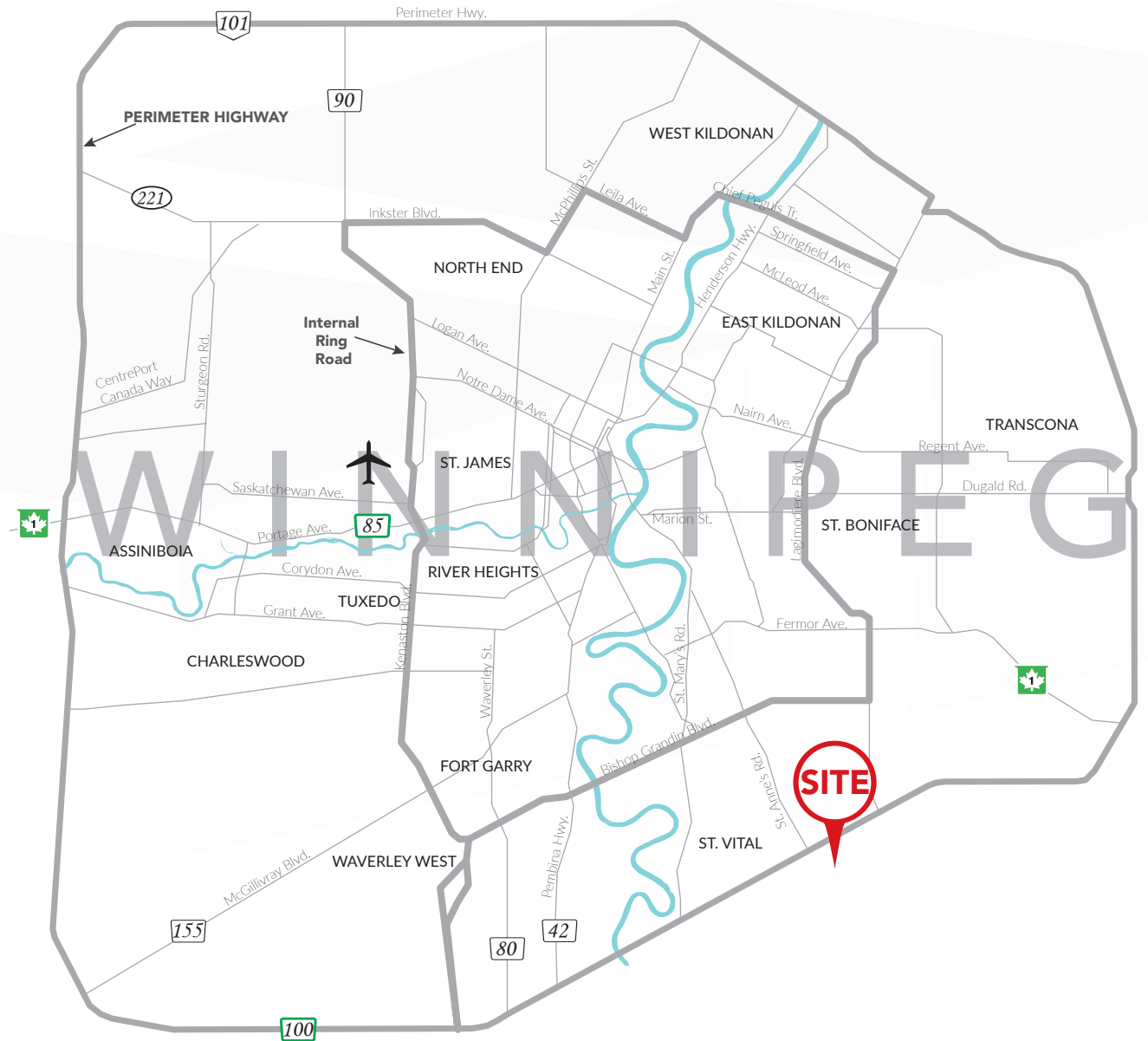
UNIVERSITY OF MANITOBA

10 minutes



PERIMETER HIGHWAY

Immediate Access



DEMOGRAPHIC ANALYSIS



POPULATION

TOTAL POPULATION

1 km

3 km

5 km

3,611

36,604

90,870

PROJECTED POPULATION (2030)

3,891

39,106

96,416



MEDIAN AGE

MEDIAN AGE

1 km

3 km

5 km

41.0

40.7

40.2



HOUSEHOLD INCOME

AVG. HOUSEHOLD INCOME

1 km

3 km

5 km

\$164,605

\$157,874

\$140,416

PROJ. HOUSEHOLD INCOME (2030)

\$191,106

\$182,453

\$162,297



HOUSEHOLDS

TOTAL HOUSEHOLDS

1 km

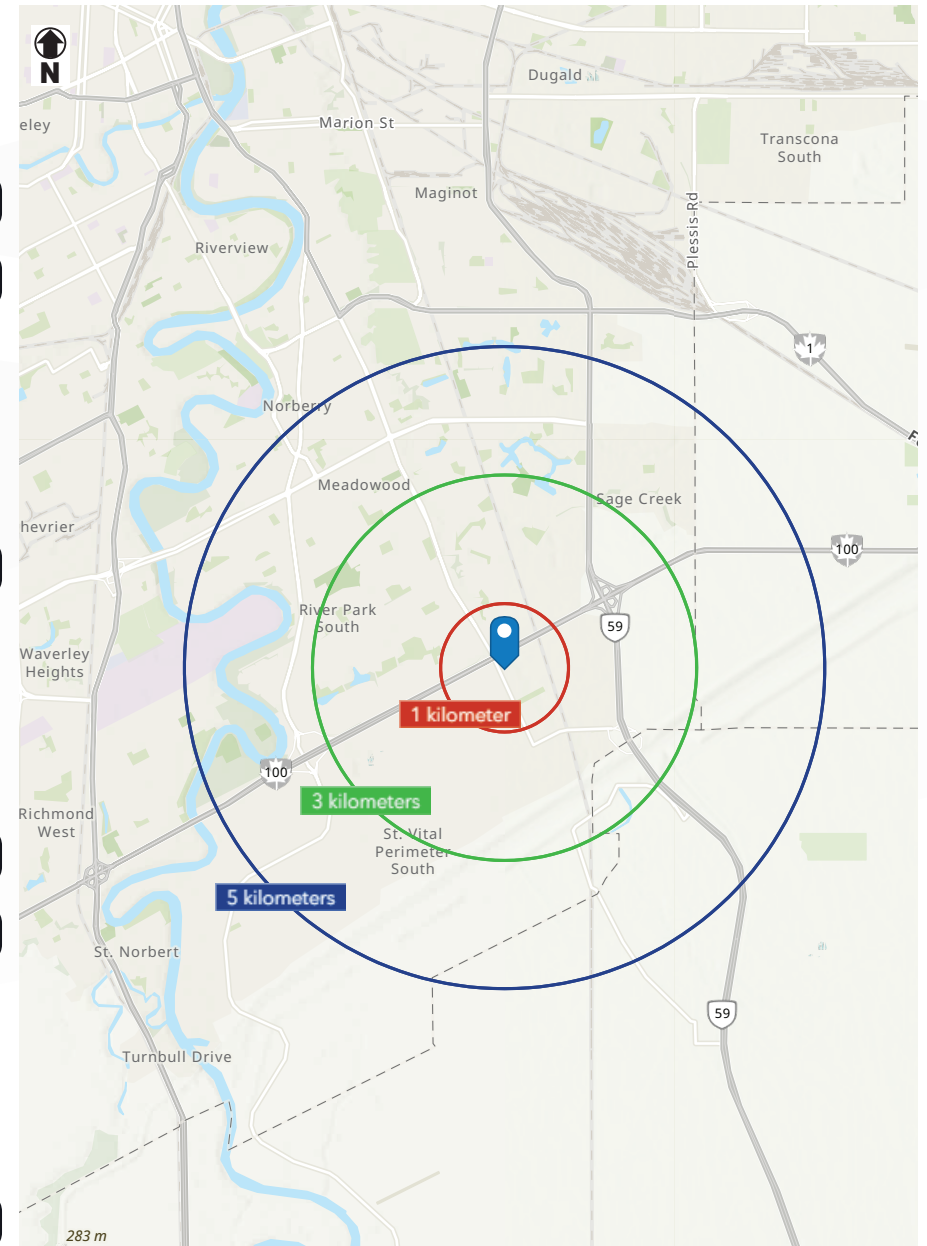
3 km

5 km

1,402

13,112

33,882





COMMERCIAL REAL ESTATE
SERVICES INC.

CONTACT

PETER KAUFMANN, Vice President, Sales & Leasing

(204) 985-1362

peter.kaufmann@capitalgrp.ca

Services provided by Peter Kaufmann Personal Real Estate Corporation

ERIC OTT, Vice President, Sales & Leasing

(204) 985-1378

eric.ott@capitalgrp.ca

Services provided by Eric A. Ott Personal Real Estate Corporation

CAPITAL COMMERCIAL REAL ESTATE SERVICES INC.

300-570 Portage Avenue, Winnipeg, MB R3C 0G4 | T (204) 943-5700 | F (204) 956-2783 | capitalgrp.ca

Disclaimer: Capital Commercial Real Estate Services Inc. ("Capital") does not accept or assume any responsibility or liability, direct or consequential, for the information set out herein, including, without limitation, any projections, images, opinions, assumptions and estimates obtained from third parties. This information has not been verified by Capital, and Capital does not guarantee the accuracy, correctness and completeness of this information. The recipient of this information should take such steps as the recipient may deem necessary to verify the information in this document prior to placing any reliance upon it. The information may change and any property described in this document may be withdrawn from the market at any time without notice or obligation to the recipient from Capital.